

OXFORD
BROOKES
UNIVERSITY

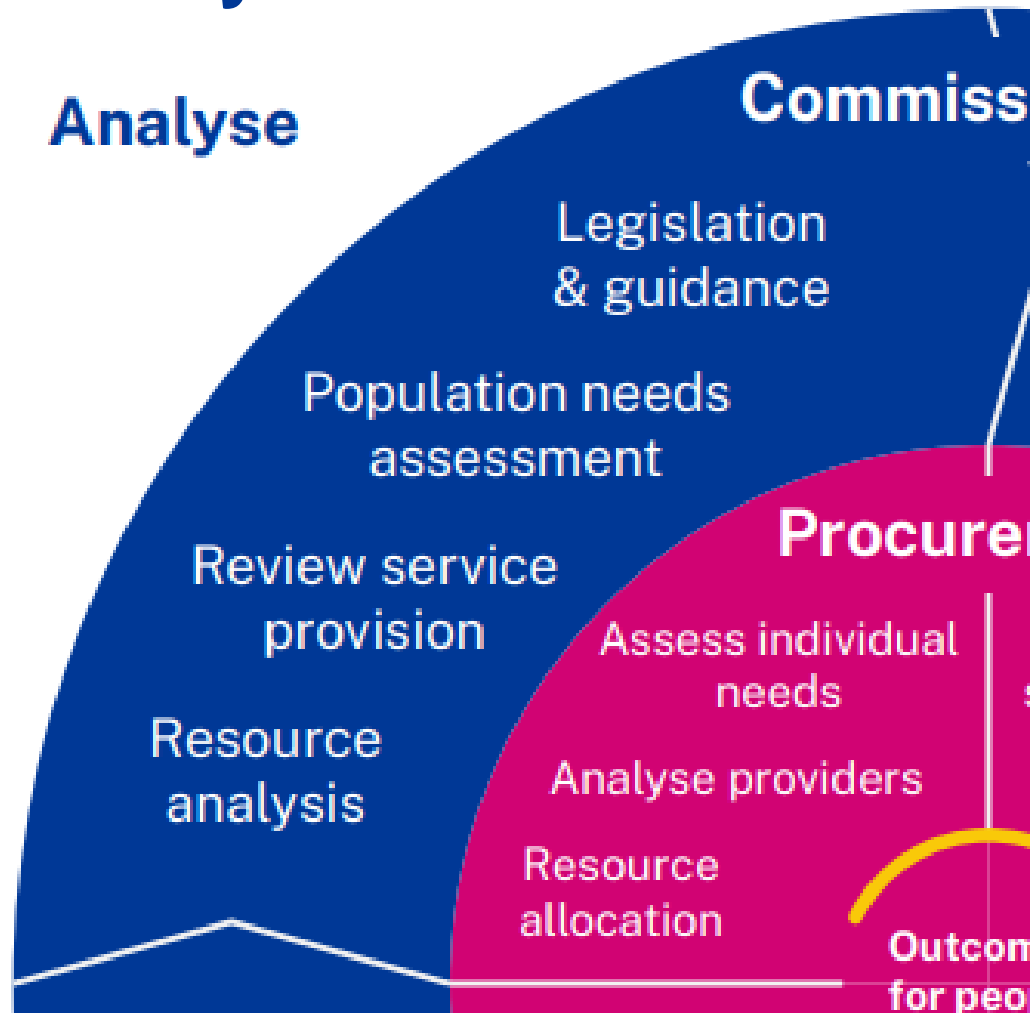


institute of
public care

Needs and Resources Analysis

© 2002 IPC Certificate in Commissioning
and Purchasing for Public Care.
All rights reserved.

Institute of Public Care Commissioning Cycle - Analyse



What is needs analysis

What?	A needs analysis is a way of estimating the nature and extent of the needs of a population so that services can be planned accordingly.
Why?	The purpose is to help focus effort and resources where they are needed most.
How?	A robust needs analysis provides commissioning agencies with a range of information that can feed into and inform the planning stage of the commissioning cycle.

Needs analysis – what does it involve?

Needs analysis looking at whole populations and the needs of vulnerable groups

Understanding the legislation, research and best practice basis for services/interventions

Establishing a picture of total resources in the local area to map against priorities

Mapping and reviewing current services across agencies; in terms of range, quality and costs



Joint Strategic Needs Assessment

“A systematic method for analysing needs of populations to inform and guide commissioning of health, wellbeing and social care services within a local authority area.”



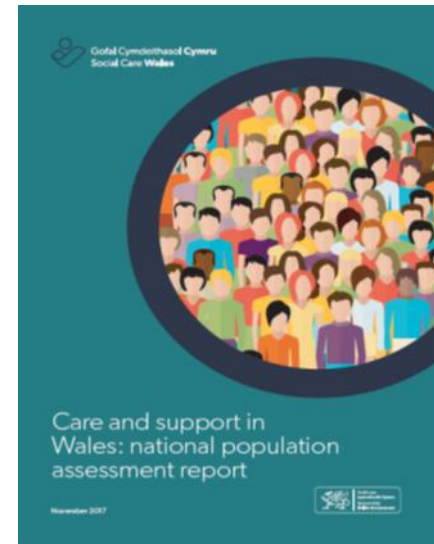
- A statutory duty since 2007; the JSNA will underpin the health and well-being strategies and commissioning plans
- It should draw on a wide range of data sources and focus on outcomes and the future
- Statutory Guidance DH 2013 - Joint Strategic Needs Assessments and Joint Health and Wellbeing Strategies

Population Needs Assessment in Wales

Nine core themes:

- Children and young people
- Older people
- Health and physical disabilities
- Learning disability and autism
- Mental health
- Sensory impairment
- Carers who need support
- Violence against women, domestic violence and sexual abuse
- Secure estate

All regions required to produce a Population Needs Assessment under the Social Services and Well-being (Wales) Act 2014



Data will include:

1. National Statistics such as demographic data, risk factors, prevalence and incidence data
2. Local data collected by public bodies such as GP practice or hospital performance data
3. Views of patients/service users and carers
4. Information and performance data collected by private and independent providers
5. National Research findings

Who are the population we need to identify?



Populations we know less about – the known unknowns



Using data intelligently

- Trends can be changed by better utilising intelligence from research, best practice and service user experience
- This can help us understand:
 - Resilience / protective factors
 - Risk factors



Target Population Groups

What target population / group would you like to focus on for the next exercise?

Who are your populations?

In groups identify who are your:

- Current user population
- Future user population
- Known unknown groups
- **Target user population**
- What might be some of the risk factors/protective factors for identified targeted population group, and what might be the implications of these?

Matching resources to needs



Resource mapping – what does it involve?

Needs analysis looking at whole populations and the needs of vulnerable groups

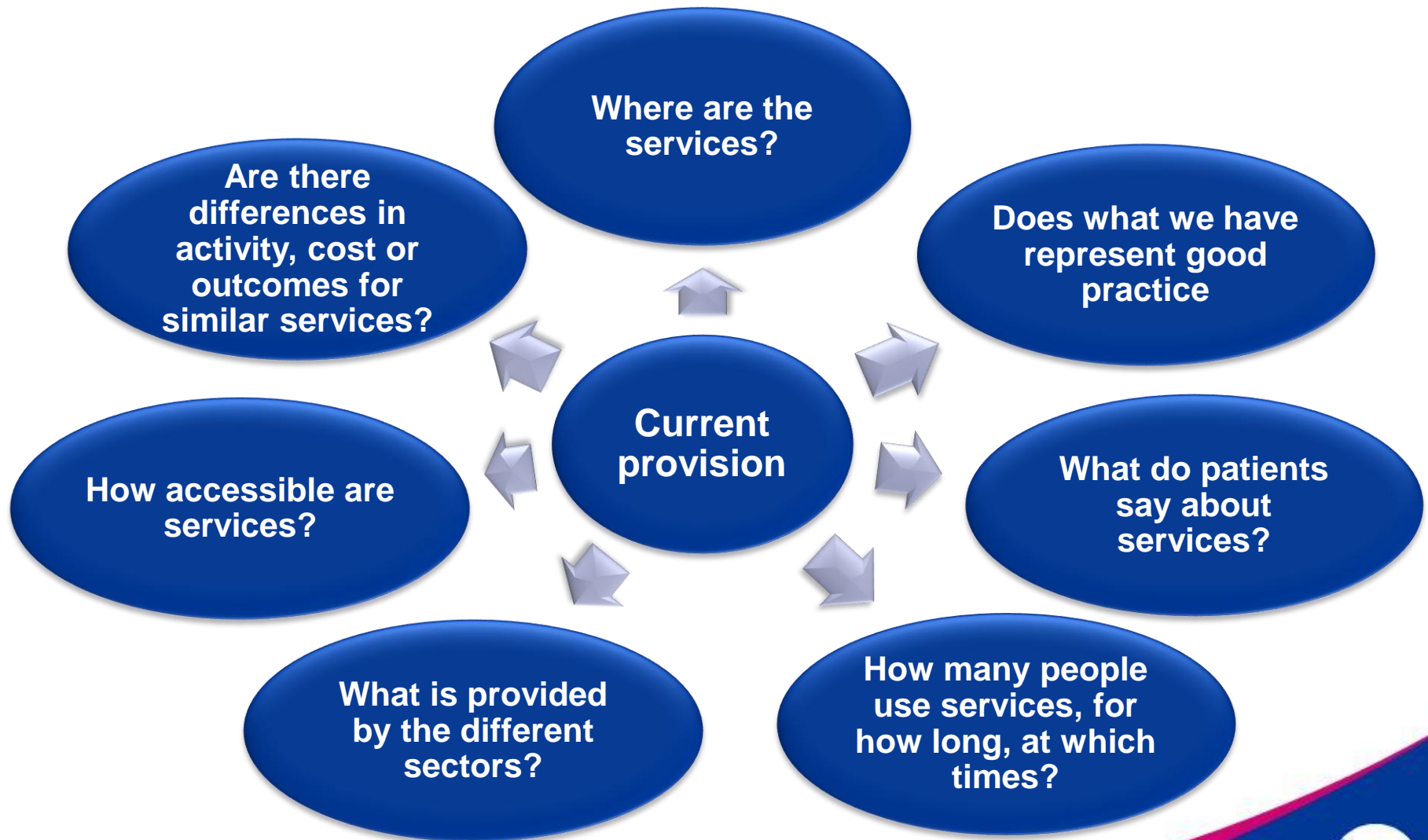
Understanding the legislation, research and best practice basis for services/interventions

Establishing a picture of total resources in the local area to map against priorities

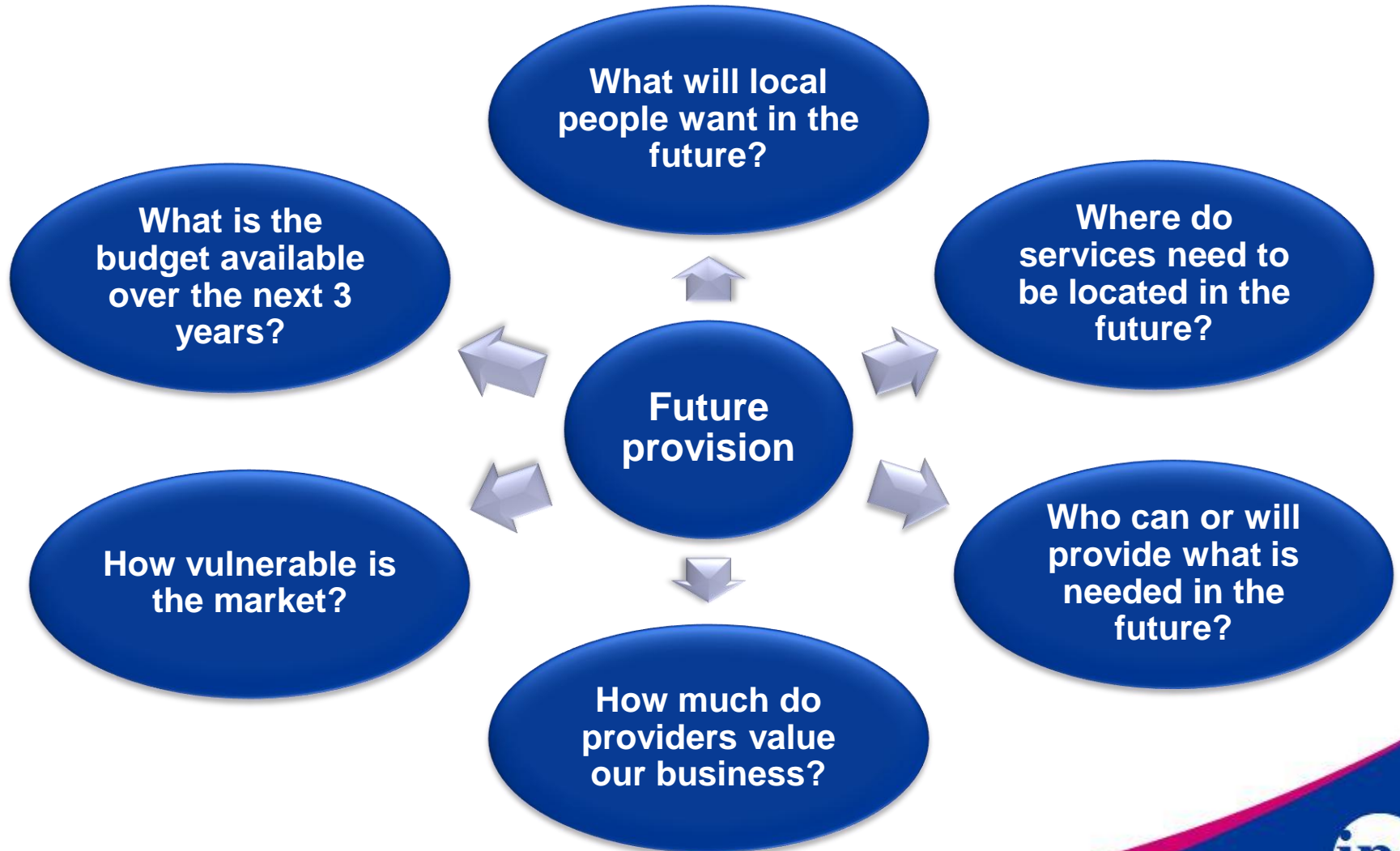
Mapping and reviewing current services across agencies; in terms of range, quality and costs



Do we know...

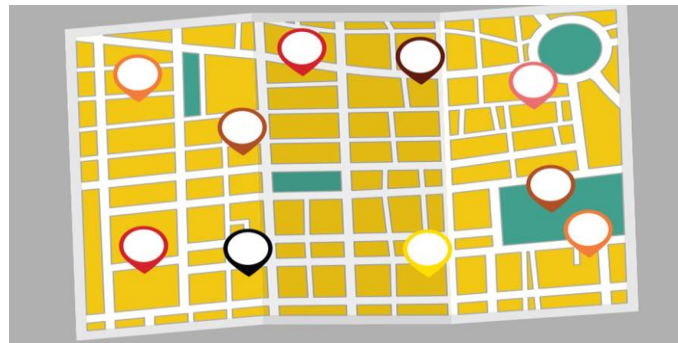


Can we find out...



Community Asset Mapping

- A process where participants make a map or inventory of the resources, skills and talents of individuals, associations and organisations.
- Discover and assemble the links between the different parts of the community, associations and agencies.
- The knowledge is used to revitalise relationships and mutual support, rebuild communities and neighbourhoods, and rediscover collective power.



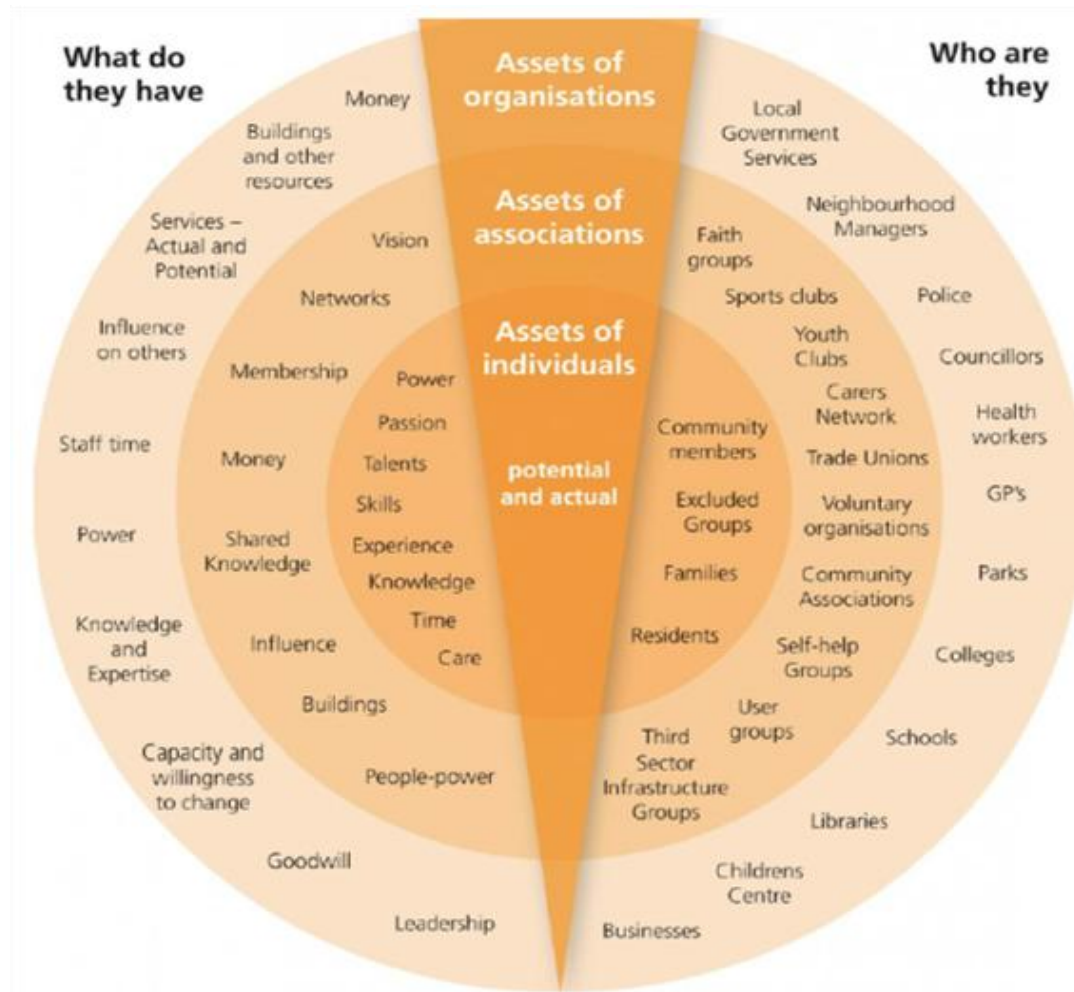
The importance of asset mapping

- Focuses on the need for services to be preventative, and stresses the importance of using existing strengths and assets of individuals and communities – an assets-based approach.
- Supports the early help approach / ambition in children social care.

The importance of local community

- A wish to better integrate care at home support with what is available from the voluntary, community and social enterprise sector including knowledge transfer, sharing of skills, experience and training opportunities.
- Steps towards more joined-up working at the local level to support the establishment and development of the 'place' aspects of health and care integration required under the Health and Care Act 2022.

As asset mapping tool



Source: Institute for Healthcare Improvement

Assets round your target population

Use the asset mapping tool to think about addressing the needs of your target population.

How does it inform your commissioning task?

- Is it about:
 - More intervention?
 - Facilitating change?
 - Remodelling existing service provision?
 - Investing in and building community assets?

Reflections from Module 1



- What have been the main things you have heard today?
- What has struck you most about the discussions?

Taught Sessions: dates in your diaries/calendars

- Module 2: **4th and 5th March**
- Module 3: **18th and 19th March**
- Module 4: **25th and 26th March**

Contact us



<https://ipc.brookes.ac.uk>



ipc_courses@brookes.ac.uk



01865 790312



[institute-of-public-care-brookes](https://www.linkedin.com/company/institute-of-public-care-brookes)